



Location: CMA1b - Oil Street Site Office

Report on 24-hour TSP monitoring

Action Level ($\mu\text{g}/\text{m}^3$) - 176.7

Limit Level ($\mu\text{g}/\text{m}^3$) - 260

| Date | Sampling Time | Weather Condition | Filter paper no. | Filter Weight, g | | Elapse Time, hr | | Sampling Time, hr | Flow Rate, m^3/min | | | Total Volume, m^3 | TSP Level, $\mu\text{g}/\text{m}^3$ |
|-----------|---------------|-------------------|------------------|------------------|--------|-----------------|---------|-------------------|------------------------------------|-----------------|---------|----------------------------|-------------------------------------|
| | | | | Initial | Final | Initial | Final | | Initial, Q_{si} | Final, Q_{sf} | Average | | |
| 30-May-14 | 8:00 | Rainy | 008675 | 2.8296 | 2.8961 | 4650.85 | 4674.85 | 24.00 | 1.28 | 1.29 | 1.29 | 1851 | 36 |
| 5-Jun-14 | 8:00 | Rainy | 008857 | 2.8512 | 2.9125 | 4677.85 | 4701.85 | 24.00 | 1.28 | 1.29 | 1.28 | 1850 | 33 |
| 11-Jun-14 | 8:00 | Rainy | 008943 | 2.8278 | 2.9833 | 4704.84 | 4728.84 | 24.00 | 1.28 | 1.29 | 1.28 | 1850 | 84 |
| 17-Jun-14 | 8:00 | Rainy | 008680 | 2.8378 | 2.9250 | 4731.85 | 4755.85 | 24.00 | 1.28 | 1.28 | 1.28 | 1849 | 47 |
| 23-Jun-14 | 8:00 | Rainy | 009037 | 2.8274 | 2.9108 | 4758.86 | 4782.86 | 24.00 | 1.29 | 1.31 | 1.30 | 1866 | 45 |

Report on 1-hour TSP monitoring

Action Level ($\mu\text{g}/\text{m}^3$) - 320.1

Limit Level ($\mu\text{g}/\text{m}^3$) - 500

| Date | Sampling Time | Weather Condition | Filter paper no. | Filter Weight, g | | Elapse Time, hr | | Sampling Time, hr | Flow Rate, m^3/min | | | Total Volume, m^3 | TSP Level, $\mu\text{g}/\text{m}^3$ |
|-----------|---------------|-------------------|------------------|------------------|--------|-----------------|---------|-------------------|------------------------------------|-----------------|---------|----------------------------|-------------------------------------|
| | | | | Initial | Final | Initial | Final | | Initial, Q_{si} | Final, Q_{sf} | Average | | |
| 31-May-14 | 8:05 | Rainy | 008676 | 2.8406 | 2.8444 | 4674.85 | 4675.85 | 1.00 | 1.32 | 1.32 | 1.32 | 79 | 48 |
| 31-May-14 | 9:10 | Rainy | 008853 | 2.8505 | 2.8528 | 4675.85 | 4676.85 | 1.00 | 1.29 | 1.29 | 1.29 | 77 | 30 |
| 31-May-14 | 10:15 | Rainy | 008855 | 2.8508 | 2.8537 | 4676.85 | 4677.85 | 1.00 | 1.32 | 1.32 | 1.32 | 79 | 37 |
| 6-Jun-14 | 8:42 | Rainy | 008946 | 2.8352 | 2.8443 | 4701.85 | 4702.85 | 1.00 | 1.32 | 1.32 | 1.32 | 79 | 115 |
| 6-Jun-14 | 10:15 | Rainy | 008945 | 2.8319 | 2.8370 | 4702.85 | 4703.85 | 1.00 | 1.32 | 1.32 | 1.32 | 79 | 64 |
| 6-Jun-14 | 13:00 | Rainy | 008944 | 2.8326 | 2.8378 | 4703.85 | 4704.85 | 1.00 | 1.32 | 1.32 | 1.32 | 79 | 66 |
| 12-Jun-14 | 8:05 | Fine | 008682 | 2.8273 | 2.8363 | 4728.84 | 4729.84 | 1.00 | 1.32 | 1.32 | 1.32 | 79 | 113 |
| 12-Jun-14 | 9:10 | Fine | 008726 | 2.8537 | 2.8658 | 4729.84 | 4730.84 | 1.00 | 1.32 | 1.32 | 1.32 | 79 | 152 |
| 12-Jun-14 | 10:15 | Fine | 008617 | 2.8374 | 2.8465 | 4730.84 | 4731.84 | 1.00 | 1.32 | 1.32 | 1.32 | 79 | 115 |
| 18-Jun-14 | 10:25 | Rainy | 009030 | 2.8260 | 2.8327 | 4755.85 | 4756.85 | 1.00 | 1.28 | 1.28 | 1.28 | 77 | 87 |
| 18-Jun-14 | 13:00 | Rainy | 009032 | 2.8334 | 2.8375 | 4756.85 | 4757.85 | 1.00 | 1.28 | 1.28 | 1.28 | 77 | 53 |
| 18-Jun-14 | 14:21 | Rainy | 009034 | 2.8244 | 2.8307 | 4757.85 | 4758.85 | 1.00 | 1.32 | 1.30 | 1.31 | 79 | 80 |
| 24-Jun-14 | 8:05 | Rainy | 009004 | 2.8224 | 2.8271 | 4782.86 | 4783.86 | 1.00 | 1.36 | 1.32 | 1.34 | 81 | 58 |
| 24-Jun-14 | 9:10 | Rainy | 009008 | 2.8219 | 2.8265 | 4783.86 | 4784.86 | 1.00 | 1.32 | 1.29 | 1.31 | 78 | 59 |
| 24-Jun-14 | 10:15 | Rainy | 008999 | 2.8253 | 2.8394 | 4784.86 | 4785.86 | 1.00 | 1.29 | 1.29 | 1.29 | 77 | 183 |



Location: CMA2a - Causeway Bay Community Centre

Report on 24-hour TSP monitoring
 Action Level ($\mu\text{g}/\text{m}^3$) - 169.5
 Limit Level ($\mu\text{g}/\text{m}^3$) - 260

| Date | Sampling Time | Weather Condition | Filter paper no. | Filter Weight, g | | Elapse Time, hr | | Sampling Time, hr | Flow Rate, m^3/min | | | Total Volume, m^3 | TSP Level, $\mu\text{g}/\text{m}^3$ |
|-----------|---------------|-------------------|------------------|------------------|--------|-----------------|----------|-------------------|------------------------------------|-----------------|---------|----------------------------|-------------------------------------|
| | | | | Initial | Final | Initial | Final | | Initial, Q_{si} | Final, Q_{sf} | Average | | |
| 30-May-14 | 8:00 | Rainy | 008674 | 2.8262 | 2.8862 | 14361.34 | 14385.34 | 24.00 | 1.27 | 1.27 | 1.27 | 1836 | 33 |
| 5-Jun-14 | 8:00 | Rainy | 008858 | 2.8442 | 2.9310 | 14388.35 | 14412.35 | 24.00 | 1.35 | 1.35 | 1.35 | 1940 | 45 |
| 11-Jun-14 | 8:00 | Rainy | 008939 | 2.8192 | 2.9450 | 14415.34 | 14439.34 | 24.00 | 1.35 | 1.35 | 1.35 | 1940 | 65 |
| 17-Jun-14 | 8:00 | Rainy | 008861 | 2.8589 | 2.9533 | 14442.35 | 14466.35 | 24.00 | 1.27 | 1.36 | 1.32 | 1900 | 50 |
| 23-Jun-14 | 8:00 | Rainy | 009038 | 2.8383 | 2.9629 | 14469.36 | 14493.36 | 24.00 | 1.37 | 1.37 | 1.37 | 1969 | 63 |

Report on 1-hour TSP monitoring
 Action Level ($\mu\text{g}/\text{m}^3$) - 323.4
 Limit Level ($\mu\text{g}/\text{m}^3$) - 500

| Date | Sampling Time | Weather Condition | Filter paper no. | Filter Weight, g | | Elapse Time, hr | | Sampling Time, hr | Flow Rate, m^3/min | | | Total Volume, m^3 | TSP Level, $\mu\text{g}/\text{m}^3$ |
|-----------|---------------|-------------------|------------------|------------------|--------|-----------------|----------|-------------------|------------------------------------|-----------------|---------|----------------------------|-------------------------------------|
| | | | | Initial | Final | Initial | Final | | Initial, Q_{si} | Final, Q_{sf} | Average | | |
| 31-May-14 | 8:05 | Rainy | 008852 | 2.8347 | 2.8373 | 14385.34 | 14386.34 | 1.00 | 1.27 | 1.27 | 1.27 | 76 | 34 |
| 31-May-14 | 9:10 | Rainy | 008854 | 2.8385 | 2.8415 | 14386.34 | 14387.34 | 1.00 | 1.27 | 1.27 | 1.27 | 76 | 39 |
| 31-May-14 | 10:15 | Rainy | 008856 | 2.8328 | 2.8368 | 14387.34 | 14388.34 | 1.00 | 1.27 | 1.27 | 1.27 | 76 | 52 |
| 6-Jun-14 | 8:47 | Rainy | 008942 | 2.8379 | 2.8443 | 14412.35 | 14413.35 | 1.00 | 1.28 | 1.28 | 1.28 | 77 | 84 |
| 6-Jun-14 | 10:08 | Rainy | 008941 | 2.8381 | 2.8439 | 14413.35 | 14414.35 | 1.00 | 1.28 | 1.28 | 1.28 | 77 | 76 |
| 6-Jun-14 | 13:00 | Rainy | 008940 | 2.8269 | 2.8352 | 14414.35 | 14415.35 | 1.00 | 1.35 | 1.28 | 1.31 | 79 | 105 |
| 12-Jun-14 | 8:05 | Fine | 008693 | 2.8321 | 2.8364 | 14439.34 | 14440.34 | 1.00 | 1.28 | 1.27 | 1.28 | 77 | 56 |
| 12-Jun-14 | 9:10 | Fine | 008727 | 2.8464 | 2.8557 | 14441.34 | 14442.34 | 1.00 | 1.28 | 1.27 | 1.28 | 77 | 122 |
| 12-Jun-14 | 10:15 | Fine | 008616 | 2.8404 | 2.8489 | 14442.34 | 14443.34 | 1.00 | 1.35 | 1.27 | 1.31 | 79 | 108 |
| 18-Jun-14 | 10:20 | Rainy | 009031 | 2.8319 | 2.8385 | 14466.35 | 14467.35 | 1.00 | 1.35 | 1.31 | 1.33 | 80 | 83 |
| 18-Jun-14 | 13:00 | Rainy | 009033 | 2.8198 | 2.8245 | 14467.35 | 14468.35 | 1.00 | 1.27 | 1.27 | 1.27 | 76 | 61 |
| 18-Jun-14 | 14:03 | Rainy | 009036 | 2.8273 | 2.8345 | 14468.35 | 14469.35 | 1.00 | 1.36 | 1.35 | 1.36 | 81 | 89 |
| 24-Jun-14 | 8:07 | Rainy | 009005 | 2.8163 | 2.8247 | 14493.36 | 14494.36 | 1.00 | 1.37 | 1.37 | 1.37 | 82 | 102 |
| 24-Jun-14 | 9:13 | Rainy | 009009 | 2.8222 | 2.8290 | 14494.36 | 14495.36 | 1.00 | 1.37 | 1.37 | 1.37 | 82 | 83 |
| 24-Jun-14 | 10:17 | Rainy | 008998 | 2.8236 | 2.8333 | 14495.36 | 14496.36 | 1.00 | 1.37 | 1.37 | 1.37 | 82 | 118 |



Location: CMA3a - CWB PRE Site Office Area

Report on 24-hour TSP monitoring

Action Level ($\mu\text{g}/\text{m}^3$) - 171

Limit Level ($\mu\text{g}/\text{m}^3$) - 260

| Date | Sampling Time | Weather Condition | Filter paper no. | Filter Weight, g | | Elapse Time, hr | | Sampling Time, hr | Flow Rate, m^3/min | | | Total Volume, m^3 | TSP Level, $\mu\text{g}/\text{m}^3$ |
|-----------|---------------|-------------------|------------------|------------------|--------|-----------------|---------|-------------------|------------------------------------|-----------------|---------|----------------------------|-------------------------------------|
| | | | | Initial | Final | Initial | Final | | Initial, Q_{si} | Final, Q_{sf} | Average | | |
| 30-May-14 | 8:00 | Rainy | 008741 | 2.8824 | 2.9494 | 1764.90 | 1788.90 | 24.00 | 1.29 | 1.29 | 1.29 | 1854 | 36 |
| 5-Jun-14 | 8:00 | Rainy | 008987 | 2.8288 | 2.9577 | 1791.90 | 1815.90 | 24.00 | 1.35 | 1.35 | 1.35 | 1950 | 66 |
| 11-Jun-14 | 8:00 | Rainy | 008473 | 2.8515 | 3.0171 | 1818.91 | 1842.91 | 24.00 | 1.35 | 1.35 | 1.35 | 1949 | 85 |
| 17-Jun-14 | 8:00 | Rainy | 008723 | 2.8634 | 3.0196 | 1845.91 | 1869.91 | 24.00 | 1.37 | 1.37 | 1.37 | 1973 | 79 |
| 23-Jun-14 | 8:00 | Rainy | 008466 | 2.8563 | 3.0464 | 1872.90 | 1896.90 | 24.00 | 1.37 | 1.37 | 1.37 | 1976 | 96 |

Report on 1-hour TSP monitoring

Action Level ($\mu\text{g}/\text{m}^3$) - 311.3

Limit Level ($\mu\text{g}/\text{m}^3$) - 500

| Date | Sampling Time | Weather Condition | Filter paper no. | Filter Weight, g | | Elapse Time, hr | | Sampling Time, hr | Flow Rate, m^3/min | | | Total Volume, m^3 | TSP Level, $\mu\text{g}/\text{m}^3$ |
|-----------|---------------|-------------------|------------------|------------------|--------|-----------------|---------|-------------------|------------------------------------|-----------------|---------|----------------------------|-------------------------------------|
| | | | | Initial | Final | Initial | Final | | Initial, Q_{si} | Final, Q_{sf} | Average | | |
| 31-May-14 | 9:25 | Rainy | 008724 | 2.8474 | 2.8600 | 1788.90 | 1789.90 | 1.00 | 1.37 | 1.37 | 1.37 | 82 | 154 |
| 31-May-14 | 10:35 | Rainy | 008992 | 2.8270 | 2.8396 | 1789.90 | 1790.90 | 1.00 | 1.37 | 1.37 | 1.37 | 82 | 154 |
| 31-May-14 | 13:00 | Rainy | 008990 | 2.8212 | 2.8322 | 1790.90 | 1791.90 | 1.00 | 1.37 | 1.37 | 1.37 | 82 | 134 |
| 6-Jun-14 | 13:00 | Rainy | 008863 | 2.8696 | 2.8711 | 1815.90 | 1816.90 | 1.00 | 1.37 | 1.37 | 1.37 | 82 | 18 |
| 6-Jun-14 | 14:06 | Rainy | 008862 | 2.8616 | 2.8674 | 1816.90 | 1817.90 | 1.00 | 1.37 | 1.37 | 1.37 | 82 | 71 |
| 6-Jun-14 | 15:35 | Rainy | 008222 | 2.8248 | 2.8310 | 1817.90 | 1818.90 | 1.00 | 1.37 | 1.37 | 1.37 | 82 | 76 |
| 12-Jun-14 | 9:25 | Fine | 008966 | 2.8338 | 2.8469 | 1842.91 | 1843.91 | 1.00 | 1.37 | 1.37 | 1.37 | 82 | 160 |
| 12-Jun-14 | 10:30 | Fine | 008986 | 2.8278 | 2.8447 | 1843.91 | 1844.91 | 1.00 | 1.37 | 1.37 | 1.37 | 82 | 206 |
| 12-Jun-14 | 13:00 | Fine | 008969 | 2.8332 | 2.8475 | 1844.91 | 1845.91 | 1.00 | 1.37 | 1.37 | 1.37 | 82 | 174 |
| 18-Jun-14 | 13:00 | Rainy | 008460 | 2.8504 | 2.8571 | 1869.91 | 1870.91 | 1.00 | 1.38 | 1.38 | 1.38 | 83 | 81 |
| 18-Jun-14 | 14:17 | Rainy | 008459 | 2.8453 | 2.8574 | 1870.91 | 1871.91 | 1.00 | 1.38 | 1.38 | 1.38 | 83 | 146 |
| 18-Jun-14 | 16:08 | Rainy | 008458 | 2.8312 | 2.8432 | 1871.91 | 1872.91 | 1.00 | 1.38 | 1.38 | 1.38 | 83 | 145 |
| 24-Jun-14 | 13:00 | Rainy | 009087 | 2.8246 | 2.8303 | 1896.90 | 1897.90 | 1.00 | 1.24 | 1.24 | 1.24 | 74 | 77 |
| 24-Jun-14 | 14:21 | Rainy | 009089 | 2.8297 | 2.8410 | 1897.90 | 1898.90 | 1.00 | 1.32 | 1.32 | 1.32 | 79 | 143 |
| 24-Jun-14 | 15:25 | Rainy | 009091 | 2.8228 | 2.8329 | 1898.90 | 1899.90 | 1.00 | 1.30 | 1.32 | 1.31 | 78 | 129 |



Location: CMA4a - SPCA

Report on 24-hour TSP monitoring

Action Level ($\mu\text{g}/\text{m}^3$) - 171.2

Limit Level ($\mu\text{g}/\text{m}^3$) - 260

| Date | Sampling Time | Weather Condition | Filter paper no. | Filter Weight, g | | Elapse Time, hr | | Sampling Time, hr | Flow Rate, m^3/min | | | Total Volume, m^3 | TSP Level, $\mu\text{g}/\text{m}^3$ |
|-----------|---------------|-------------------|------------------|------------------|--------|-----------------|----------|-------------------|------------------------------------|-----------------|---------|----------------------------|-------------------------------------|
| | | | | Initial | Final | Initial | Final | | Initial, Q_{si} | Final, Q_{sf} | Average | | |
| 30-May-14 | 8:00 | Rainy | 008740 | 2.8550 | 2.9007 | 18588.99 | 18612.99 | 24.00 | 1.29 | 1.29 | 1.29 | 1854 | 25 |
| 5-Jun-14 | 8:00 | Rainy | 008988 | 2.8275 | 2.8891 | 18614.99 | 18638.99 | 24.00 | 1.29 | 1.29 | 1.29 | 1853 | 33 |
| 11-Jun-14 | 8:00 | Rainy | 008472 | 2.8486 | 2.9603 | 18641.99 | 18665.99 | 24.00 | 1.29 | 1.29 | 1.29 | 1853 | 60 |
| 17-Jun-14 | 8:00 | Rainy | 008965 | 2.8164 | 2.8859 | 18669.99 | 18693.99 | 24.00 | 1.29 | 1.29 | 1.29 | 1853 | 38 |
| 23-Jun-14 | 8:00 | Rainy | 008553 | 2.8493 | 2.9256 | 18695.99 | 18719.99 | 24.00 | 1.29 | 1.29 | 1.29 | 1856 | 41 |

Report on 1-hour TSP monitoring

Action Level ($\mu\text{g}/\text{m}^3$) - 312.5

Limit Level ($\mu\text{g}/\text{m}^3$) - 500

| Date | Sampling Time | Weather Condition | Filter paper no. | Filter Weight, g | | Elapse Time, hr | | Sampling Time, hr | Flow Rate, m^3/min | | | Total Volume, m^3 | TSP Level, $\mu\text{g}/\text{m}^3$ |
|-----------|---------------|-------------------|------------------|------------------|--------|-----------------|----------|-------------------|------------------------------------|-----------------|---------|----------------------------|-------------------------------------|
| | | | | Initial | Final | Initial | Final | | Initial, Q_{si} | Final, Q_{sf} | Average | | |
| 31-May-14 | 9:15 | Rainy | 008921 | 2.8385 | 2.8440 | 18612.99 | 18613.99 | 1.00 | 1.29 | 1.29 | 1.29 | 77 | 71 |
| 31-May-14 | 10:20 | Rainy | 008991 | 2.8291 | 2.8349 | 18613.99 | 18614.99 | 1.00 | 1.29 | 1.29 | 1.29 | 77 | 75 |
| 31-May-14 | 13:00 | Rainy | 008989 | 2.8224 | 2.8307 | 18614.99 | 18615.99 | 1.00 | 1.29 | 1.29 | 1.29 | 77 | 107 |
| 6-Jun-14 | 13:00 | Rainy | 008938 | 2.8254 | 2.8306 | 18638.99 | 18639.99 | 1.00 | 1.29 | 1.29 | 1.29 | 77 | 67 |
| 6-Jun-14 | 14:16 | Rainy | 008937 | 2.8253 | 2.8287 | 18639.99 | 18640.99 | 1.00 | 1.29 | 1.29 | 1.29 | 77 | 44 |
| 6-Jun-14 | 15:22 | Rainy | 008936 | 2.8296 | 2.8328 | 18640.99 | 18641.99 | 1.00 | 1.29 | 1.29 | 1.29 | 77 | 41 |
| 12-Jun-14 | 9:10 | Fine | 008920 | 2.8235 | 2.8321 | 18665.99 | 18666.99 | 1.00 | 1.29 | 1.29 | 1.29 | 77 | 111 |
| 12-Jun-14 | 10:15 | Fine | 008967 | 2.8143 | 2.8240 | 18666.99 | 18667.99 | 1.00 | 1.29 | 1.29 | 1.29 | 77 | 126 |
| 12-Jun-14 | 13:00 | Fine | 008968 | 2.8222 | 2.8311 | 18667.99 | 18668.99 | 1.00 | 1.29 | 1.29 | 1.29 | 77 | 115 |
| 18-Jun-14 | 13:00 | Rainy | 008457 | 2.8509 | 2.8552 | 18693.99 | 18694.99 | 1.00 | 1.29 | 1.29 | 1.29 | 77 | 56 |
| 18-Jun-14 | 14:07 | Rainy | 008456 | 2.8418 | 2.8462 | 18694.99 | 18695.99 | 1.00 | 1.29 | 1.29 | 1.29 | 77 | 57 |
| 18-Jun-14 | 16:26 | Rainy | 008455 | 2.8500 | 2.8546 | 18695.99 | 18696.99 | 1.00 | 1.29 | 1.29 | 1.29 | 77 | 60 |
| 24-Jun-14 | 13:00 | Rainy | 009086 | 2.8162 | 2.8212 | 18719.99 | 18720.99 | 1.00 | 1.31 | 1.31 | 1.31 | 78 | 64 |
| 24-Jun-14 | 14:10 | Rainy | 009088 | 2.8289 | 2.8334 | 18720.99 | 18721.99 | 1.00 | 1.29 | 1.29 | 1.29 | 77 | 58 |
| 24-Jun-14 | 15:14 | Rainy | 009090 | 2.8217 | 2.8276 | 18721.99 | 18722.99 | 1.00 | 1.32 | 1.32 | 1.32 | 79 | 74 |



Location: CMA5a - Children Garden opposite to Pedestrian Plaza

Report on 24-hour TSP monitoring

Action Level ($\mu\text{g}/\text{m}^3$) - 181
 Limit Level ($\mu\text{g}/\text{m}^3$) - 260

| Date | Sampling Time | Weather Condition | Filter paper no. | Filter Weight, g | | Elapse Time, hr | | Sampling Time, hr | Flow Rate, m^3/min | | | Total Volume, m^3 | TSP Level, $\mu\text{g}/\text{m}^3$ |
|-----------|---------------|-------------------|------------------|------------------|--------|-----------------|----------|-------------------|------------------------------------|-----------------|---------|----------------------------|-------------------------------------|
| | | | | Initial | Final | Initial | Final | | Initial, Q_{si} | Final, Q_{sf} | Average | | |
| 30-May-14 | 8:00 | Rainy | 008734 | 2.8567 | 2.9771 | 19568.88 | 19592.88 | 24.00 | 1.36 | 1.37 | 1.37 | 1966 | 61 |
| 5-Jun-14 | 8:00 | Rainy | 009062 | 2.8353 | 2.9553 | 19595.87 | 19619.87 | 24.00 | 1.36 | 1.37 | 1.36 | 1965 | 61 |
| 11-Jun-14 | 8:00 | Rainy | 008754 | 2.8667 | 3.0235 | 19622.89 | 19646.89 | 24.00 | 1.36 | 1.37 | 1.36 | 1965 | 80 |
| 17-Jun-14 | 8:00 | Rainy | 008620 | 2.8297 | 2.9709 | 19650.04 | 19674.04 | 24.00 | 1.38 | 1.38 | 1.38 | 1989 | 71 |
| 23-Jun-14 | 8:00 | Rainy | 009072 | 2.8429 | 2.9715 | 19677.04 | 19701.04 | 24.00 | 1.38 | 1.38 | 1.38 | 1993 | 65 |

Report on 1-hour TSP monitoring

Action Level ($\mu\text{g}/\text{m}^3$) - 332
 Limit Level ($\mu\text{g}/\text{m}^3$) - 500

| Date | Sampling Time | Weather Condition | Filter paper no. | Filter Weight, g | | Elapse Time, hr | | Sampling Time, hr | Flow Rate, m^3/min | | | Total Volume, m^3 | TSP Level, $\mu\text{g}/\text{m}^3$ |
|-----------|---------------|-------------------|------------------|------------------|--------|-----------------|----------|-------------------|------------------------------------|-----------------|---------|----------------------------|-------------------------------------|
| | | | | Initial | Final | Initial | Final | | Initial, Q_{si} | Final, Q_{sf} | Average | | |
| 31-May-14 | 13:00 | Rainy | 009070 | 2.8345 | 2.8386 | 19592.88 | 19593.88 | 1.00 | 1.30 | 1.30 | 1.30 | 78 | 53 |
| 31-May-14 | 14:36 | Rainy | 009068 | 2.8497 | 2.8521 | 19593.88 | 19594.88 | 1.00 | 1.30 | 1.30 | 1.30 | 78 | 31 |
| 31-May-14 | 15:48 | Rainy | 009065 | 2.8495 | 2.8516 | 19594.88 | 19595.88 | 1.00 | 1.30 | 1.30 | 1.30 | 78 | 27 |
| 6-Jun-14 | 13:00 | Rainy | 008919 | 2.8272 | 2.8334 | 19619.87 | 19620.87 | 1.00 | 1.37 | 1.37 | 1.37 | 82 | 76 |
| 6-Jun-14 | 14:37 | Rainy | 009056 | 2.8423 | 2.8453 | 19620.87 | 19621.87 | 1.00 | 1.33 | 1.33 | 1.33 | 80 | 38 |
| 6-Jun-14 | 16:53 | Rainy | 008752 | 2.8692 | 2.8808 | 19621.87 | 19622.87 | 1.00 | 1.37 | 1.37 | 1.37 | 82 | 142 |
| 12-Jun-14 | 13:00 | Fine | 008681 | 2.8316 | 2.8352 | 19646.89 | 19647.89 | 1.00 | 1.37 | 1.37 | 1.37 | 82 | 44 |
| 12-Jun-14 | 14:05 | Fine | 008979 | 2.8270 | 2.8427 | 19647.89 | 19648.89 | 1.00 | 1.33 | 1.33 | 1.33 | 80 | 197 |
| 12-Jun-14 | 15:10 | Fine | 008972 | 2.8263 | 2.8420 | 19648.89 | 19649.89 | 1.00 | 1.37 | 1.37 | 1.37 | 82 | 192 |
| 18-Jun-14 | 9:34 | Rainy | 008959 | 2.8283 | 2.8358 | 19674.04 | 19675.04 | 1.00 | 1.38 | 1.38 | 1.38 | 83 | 90 |
| 18-Jun-14 | 13:00 | Rainy | 008956 | 2.8364 | 2.8466 | 19675.04 | 19676.04 | 1.00 | 1.38 | 1.38 | 1.38 | 83 | 123 |
| 18-Jun-14 | 14:30 | Rainy | 008963 | 2.8254 | 2.8356 | 19676.04 | 19677.04 | 1.00 | 1.38 | 1.38 | 1.38 | 83 | 123 |
| 24-Jun-14 | 8:13 | Rainy | 009007 | 2.8259 | 2.8353 | 19701.04 | 19702.04 | 1.00 | 1.38 | 1.38 | 1.38 | 83 | 113 |
| 24-Jun-14 | 14:00 | Rainy | 009028 | 2.8279 | 2.8339 | 19702.04 | 19703.04 | 1.00 | 1.38 | 1.38 | 1.38 | 83 | 72 |
| 24-Jun-14 | 15:05 | Rainy | 008351 | 2.8607 | 2.8669 | 19703.04 | 19704.04 | 1.00 | 1.38 | 1.38 | 1.38 | 83 | 75 |



Location: CMA6a - WD2 PRE Office

Report on 24-hour TSP monitoring

Action Level - 187.3 $\mu\text{g}/\text{m}^3$
Limit Level - 260 $\mu\text{g}/\text{m}^3$

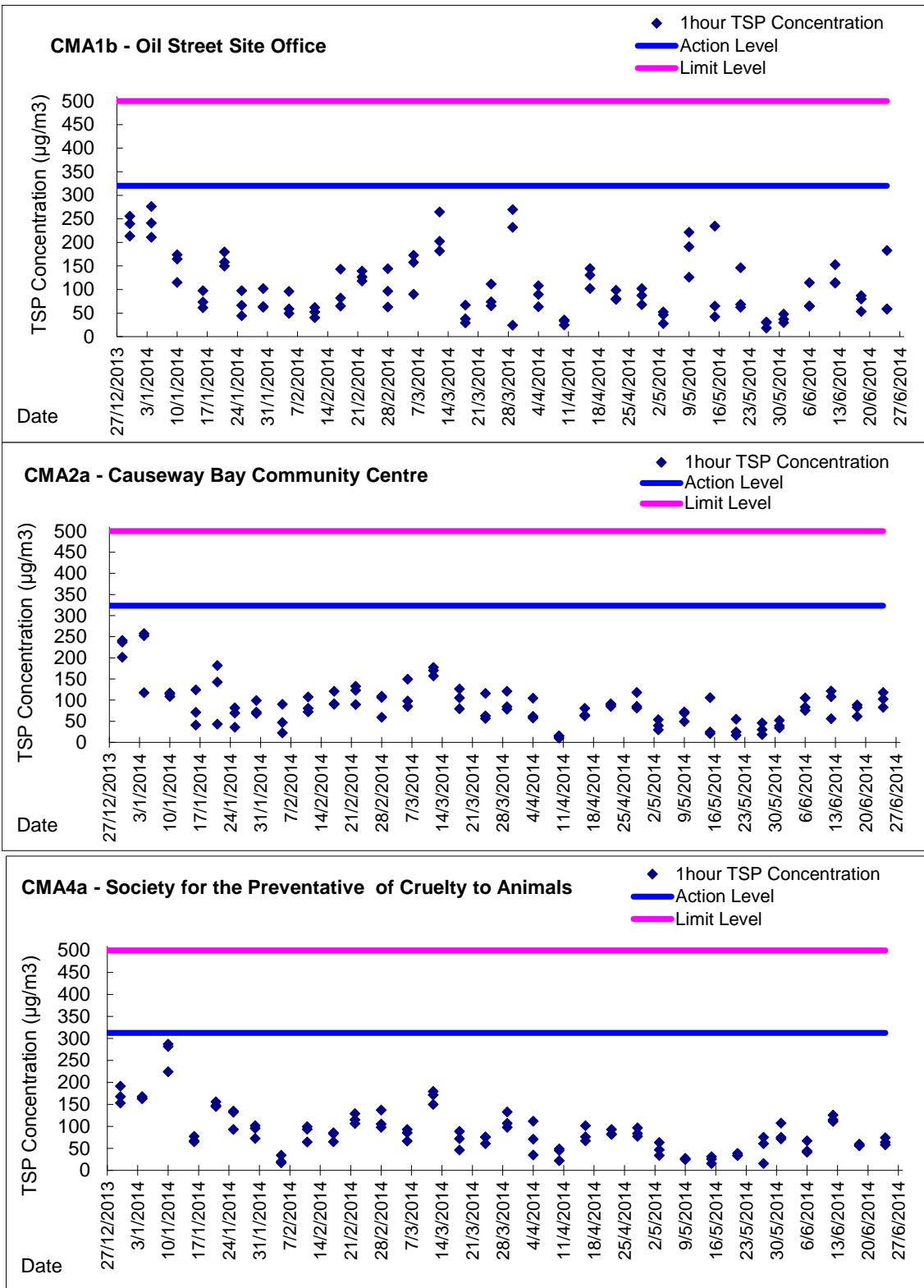
| Date | Sampling Time | Weather Condition | Filter paper no. | Filter Weight, g | | Elapse Time, hr | | Sampling Time, hr | Flow Rate, m^3/min | | | Total Volume, m^3 | TSP Level, $\mu\text{g}/\text{m}^3$ |
|-----------|---------------|-------------------|------------------|------------------|--------|-----------------|----------|-------------------|------------------------------------|-----------------|---------|----------------------------|-------------------------------------|
| | | | | Initial | Final | Initial | Final | | Initial, Q_{si} | Final, Q_{sf} | Average | | |
| 30-May-14 | 8:00 | Rainy | 008736 | 2.8591 | 2.9182 | 17920.58 | 17944.58 | 24.00 | 1.31 | 1.31 | 1.31 | 1891 | 31 |
| 5-Jun-14 | 8:00 | Rainy | 009044 | 2.8354 | 2.9195 | 17947.58 | 17971.58 | 24.00 | 1.35 | 1.35 | 1.35 | 1940 | 43 |
| 11-Jun-14 | 8:00 | Rainy | 008755 | 2.8683 | 3.0105 | 17974.56 | 17998.56 | 24.00 | 1.35 | 1.35 | 1.35 | 1940 | 73 |
| 17-Jun-14 | 8:00 | Rainy | 008973 | 2.8168 | 2.9020 | 18001.62 | 18025.62 | 24.00 | 1.38 | 1.36 | 1.37 | 1977 | 43 |
| 23-Jun-14 | 8:00 | Rainy | 008962 | 2.8389 | 2.9268 | 18028.62 | 18052.62 | 24.00 | 1.33 | 1.33 | 1.33 | 1918 | 46 |

Report on 1-hour TSP monitoring

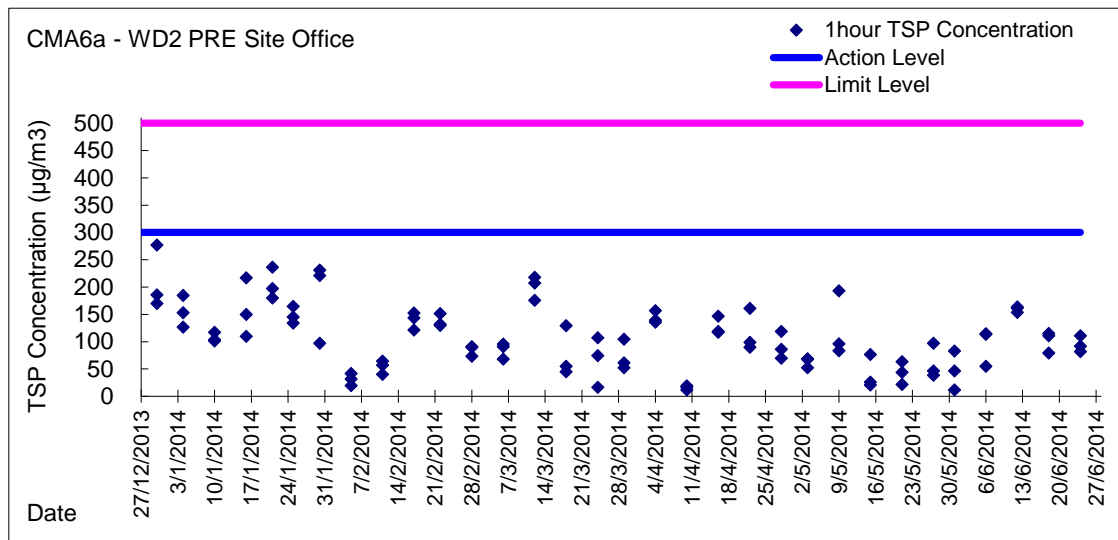
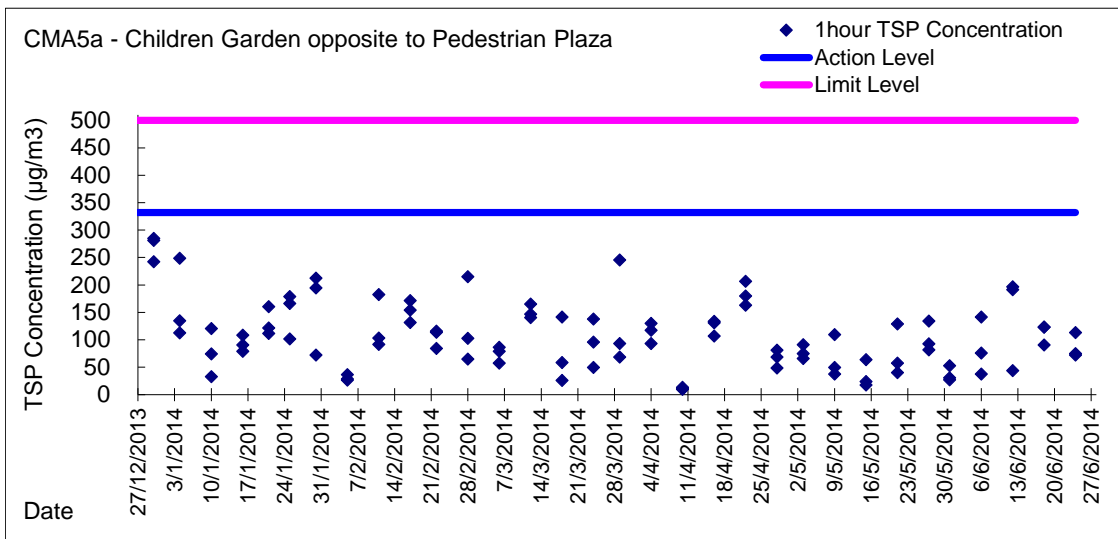
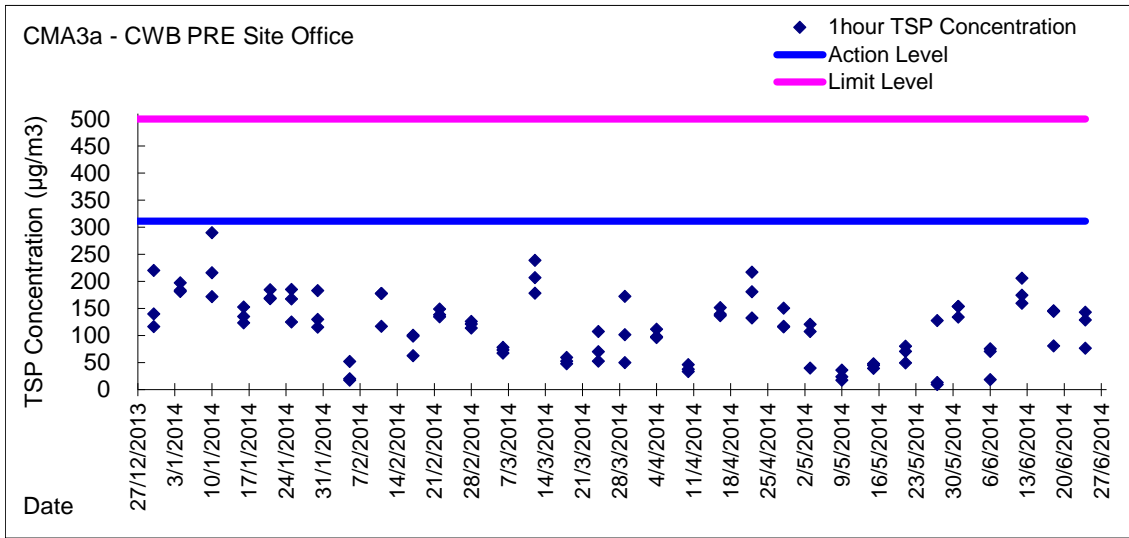
Action Level - 300.1 $\mu\text{g}/\text{m}^3$
Limit Level - 500 $\mu\text{g}/\text{m}^3$

| Date | Sampling Time | Weather Condition | Filter paper no. | Filter Weight, g | | Elapse Time, hr | | Sampling Time, hr | Flow Rate, m^3/min | | | Total Volume, m^3 | TSP Level, $\mu\text{g}/\text{m}^3$ |
|-----------|---------------|-------------------|------------------|------------------|--------|-----------------|----------|-------------------|------------------------------------|-----------------|---------|----------------------------|-------------------------------------|
| | | | | Initial | Final | Initial | Final | | Initial, Q_{si} | Final, Q_{sf} | Average | | |
| 31-May-14 | 14:00 | Rainy | 008751 | 2.8749 | 2.8758 | 17944.58 | 17945.58 | 1.00 | 1.29 | 1.29 | 1.29 | 77 | 12 |
| 31-May-14 | 15:05 | Rainy | 009067 | 2.8438 | 2.8474 | 17945.58 | 17946.58 | 1.00 | 1.29 | 1.29 | 1.29 | 77 | 47 |
| 31-May-14 | 16:53 | Rainy | 009064 | 2.8653 | 2.8717 | 17946.58 | 17947.58 | 1.00 | 1.29 | 1.29 | 1.29 | 77 | 83 |
| 6-Jun-14 | 13:00 | Rainy | 008918 | 2.8311 | 2.8402 | 17971.58 | 17972.58 | 1.00 | 1.32 | 1.32 | 1.32 | 79 | 115 |
| 6-Jun-14 | 14:46 | Rainy | 009057 | 2.8353 | 2.8397 | 17972.58 | 17973.58 | 1.00 | 1.34 | 1.34 | 1.34 | 80 | 55 |
| 6-Jun-14 | 16:18 | Rainy | 009058 | 2.8141 | 2.8231 | 17973.58 | 17974.58 | 1.00 | 1.34 | 1.31 | 1.32 | 79 | 113 |
| 12-Jun-14 | 13:00 | Fine | 008975 | 2.8280 | 2.8402 | 17998.56 | 17999.56 | 1.00 | 1.32 | 1.32 | 1.32 | 79 | 154 |
| 12-Jun-14 | 14:05 | Fine | 008977 | 2.8384 | 2.8514 | 17999.56 | 18000.56 | 1.00 | 1.34 | 1.34 | 1.34 | 80 | 162 |
| 12-Jun-14 | 15:10 | Fine | 008980 | 2.8291 | 2.8421 | 18001.56 | 18002.56 | 1.00 | 1.34 | 1.31 | 1.32 | 79 | 164 |
| 18-Jun-14 | 9:21 | Rainy | 008954 | 2.8320 | 2.8383 | 18025.62 | 18026.62 | 1.00 | 1.32 | 1.32 | 1.32 | 79 | 79 |
| 18-Jun-14 | 13:00 | Rainy | 008958 | 2.8257 | 2.8346 | 18026.62 | 18027.62 | 1.00 | 1.34 | 1.34 | 1.34 | 80 | 111 |
| 18-Jun-14 | 14:18 | Rainy | 008955 | 2.8219 | 2.8308 | 18027.62 | 18028.62 | 1.00 | 1.29 | 1.29 | 1.29 | 77 | 115 |
| 24-Jun-14 | 8:10 | Rainy | 009039 | 2.8320 | 2.8407 | 18052.62 | 18053.62 | 1.00 | 1.29 | 1.32 | 1.31 | 78 | 111 |
| 24-Jun-14 | 13:00 | Rainy | 008993 | 2.8284 | 2.8357 | 18053.62 | 18054.62 | 1.00 | 1.32 | 1.32 | 1.32 | 79 | 92 |
| 24-Jun-14 | 14:07 | Rainy | 009029 | 2.8251 | 2.8316 | 18054.62 | 18055.62 | 1.00 | 1.32 | 1.32 | 1.32 | 79 | 82 |

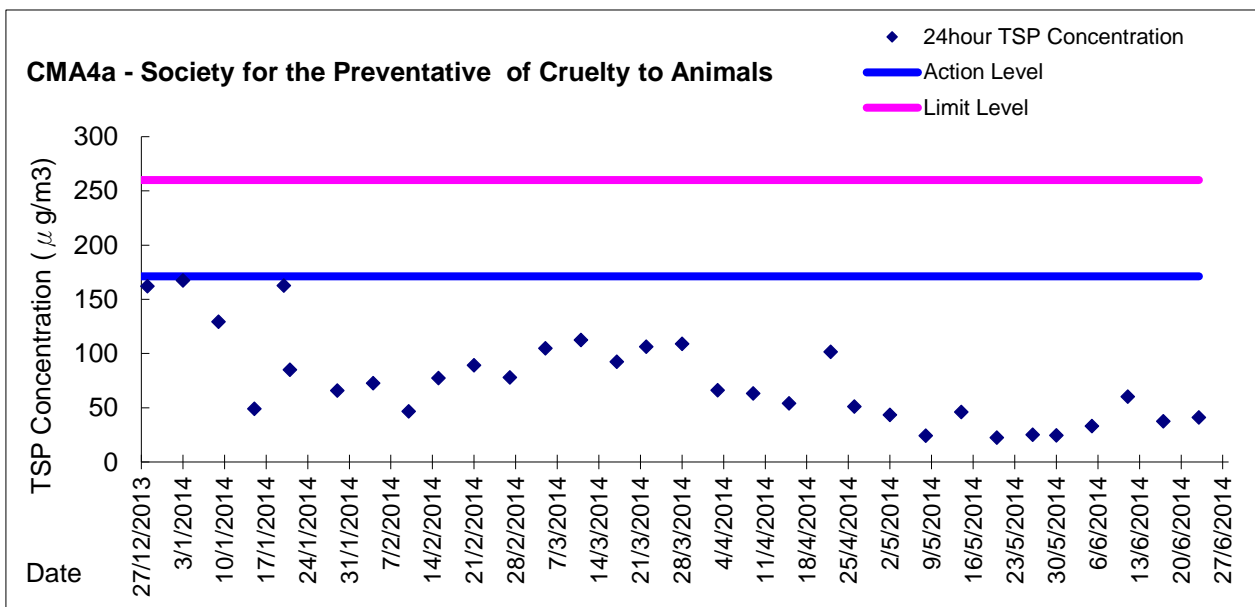
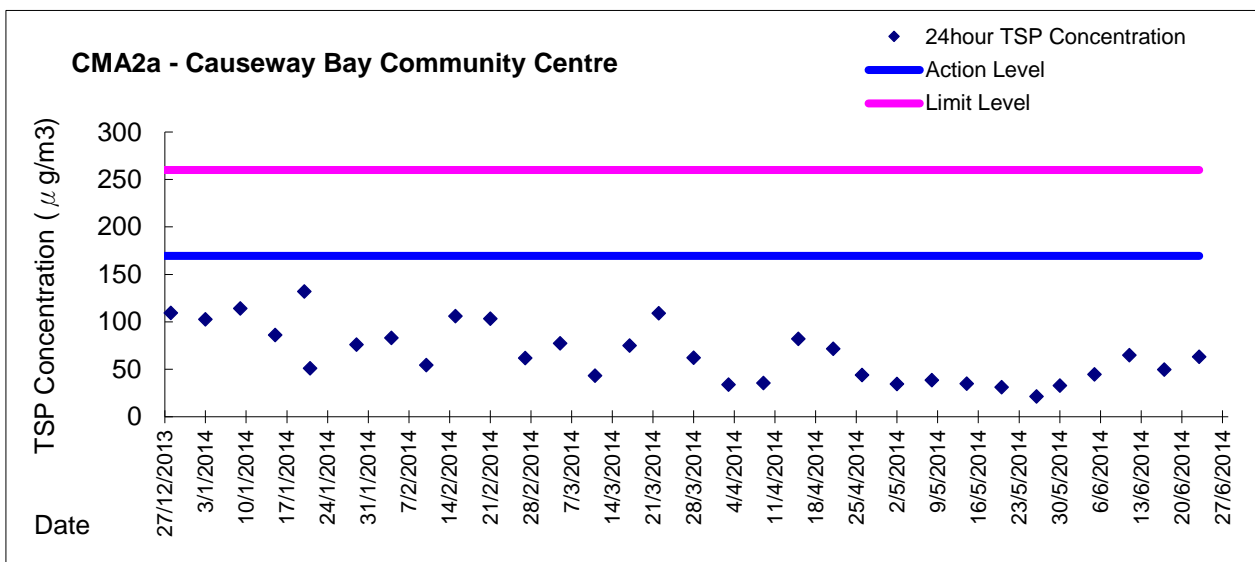
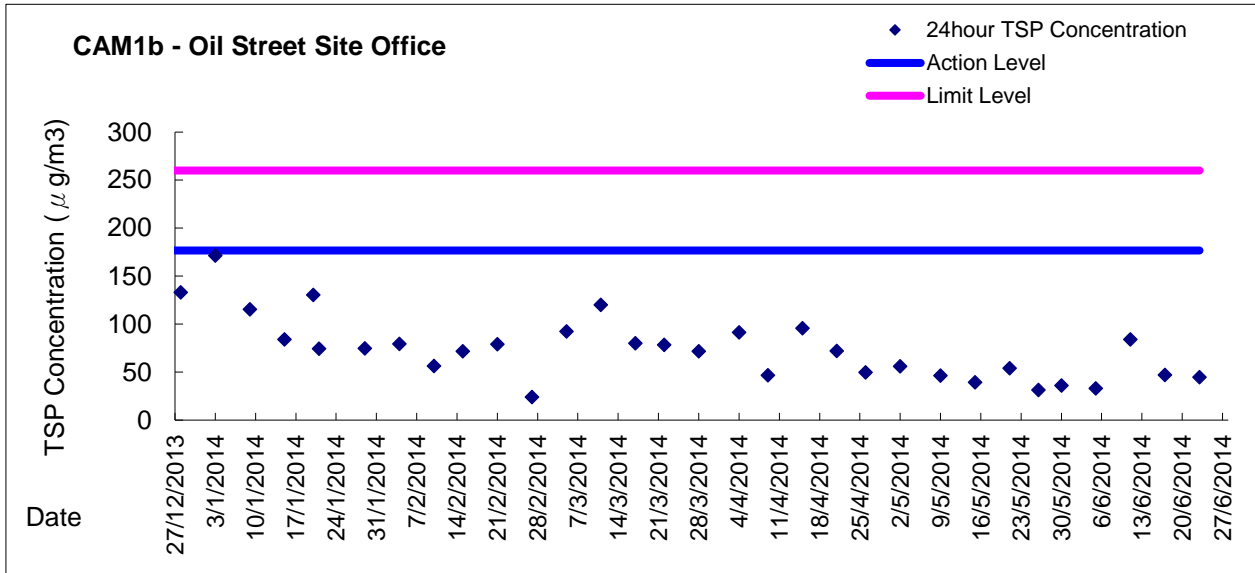
Graphic Presentation of 1 hour TSP Result



Graphic Presentation of 1 hour TSP Result



Graphic Presentation of 24 hour TSP Result



Graphic Presentation of 24 hour TSP Result

